



Avid® PostDeko® Demo “Try-Out” Software

Avid Deko comprehensive SD/HD real time graphics solutions combine unmatched creation speed, stunning real-time visuals, advanced automation capabilities, legendary on-air reliability and a suite of tools that set the pace in on-air graphics.

Avid PostDeko is software only, designed for offline creation of SD and HD real-time graphics and Motion effects, for transfer to the online on-air Deko system or other production devices.

This PostDeko Demo software offers a hands-on look at Deko performance including the ease of graphic composition and extensive real time* Motion capabilities. Avid recommends that you read all the information in this document thoroughly before installing or using this demo version of PostDeko software.



Specifications:

PostDeko will run on any pc system that meets or exceeds the following specification:

- Windows compatible pc or laptop running Windows XP (service pack 1 or later) or Windows 2000 (service pack 2 or later)
- 256MB RAM
- 4MB SVGA adapter, which provides at least 24-bit color at 1024x768 screen resolution.

* Real time Motion performance of PostDeko software is dependent on the VGA card/chip and cannot be guaranteed for your particular system.

Installing PostDeko Demo software:

1. Exit all Windows XP programs before installing the software. The installation requires that you exit PostDeko.
2. Before installing the PostDeko Demo software, you must be logged in to Windows XP, and belong to the Administrator group.
3. After downloading the PostDeko Demo installation file, launch on your pc or laptop.
4. Follow the installation directions on the screen.

There are several types of installations available. Avid recommends you choose “Typical” installation, so that you may have access to program Help menus.

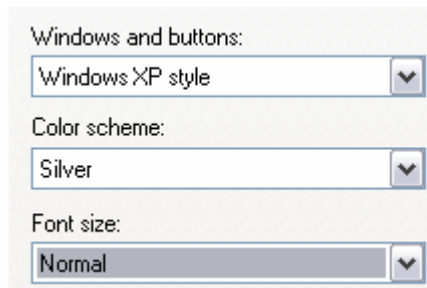
- A “Typical” installation installs the components marked (typical).
- A “Custom” installation allows you to select which components to install.
- A “Minimal” installation is for users with minimal disk space. Only the necessary files will be copied to your hard drive.

Desktop Settings:

In order to operate sufficiently, PostDeko requires particular desktop and toolbar settings.

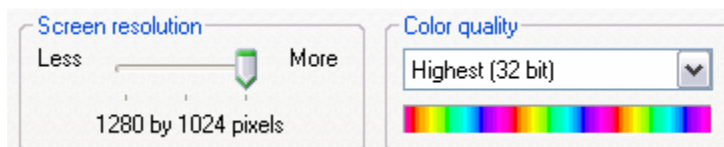
To check or change desktop settings:

1. Right-click on the desktop and select Properties. The Display Properties dialog box opens.
2. Click the Appearance tab, and make sure the Font size is set to Normal.



3. Click the Settings tab, and make sure the settings are set as follows:

- Color quality: Highest (32 bit)
- Screen resolution: Choose 1024 by 768 or 1280x1024 pixels

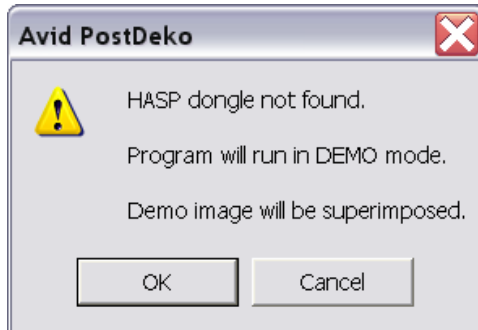


Hide the Windows toolbar:

1. Right-click on the Windows XP toolbar and select Properties. The Toolbar Properties dialog box opens.
2. Place a check mark in the Auto hide check box, then Click OK.

Running PostDeko Demo Software:

When you launch PostDeko, you may see the following prompt, indicating that the program will run in demo mode. Simply click OK, to start the PostDeko program.



PostDeko can run in the following video standards:

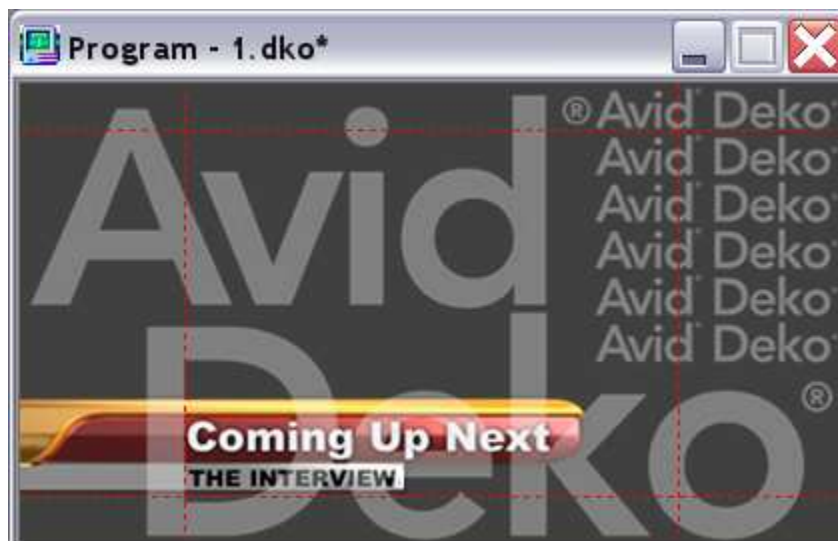
SD: NTSC and PAL
HD 1080i: /60, /59.94, /50
HD 1080p: /24, /24sf, /23.98, /23.98sf
HD 1035i/60
HD 720p: /60, /59.94

Refer to the *Avid Deko Products User's Guide* for instructions on how to change video standards (see Useful Resources below).

Demo Software Limitations:

This PostDeko Demo program is a “try-out” version of software and contains the following operational limitations as compared to the full PostDeko version:

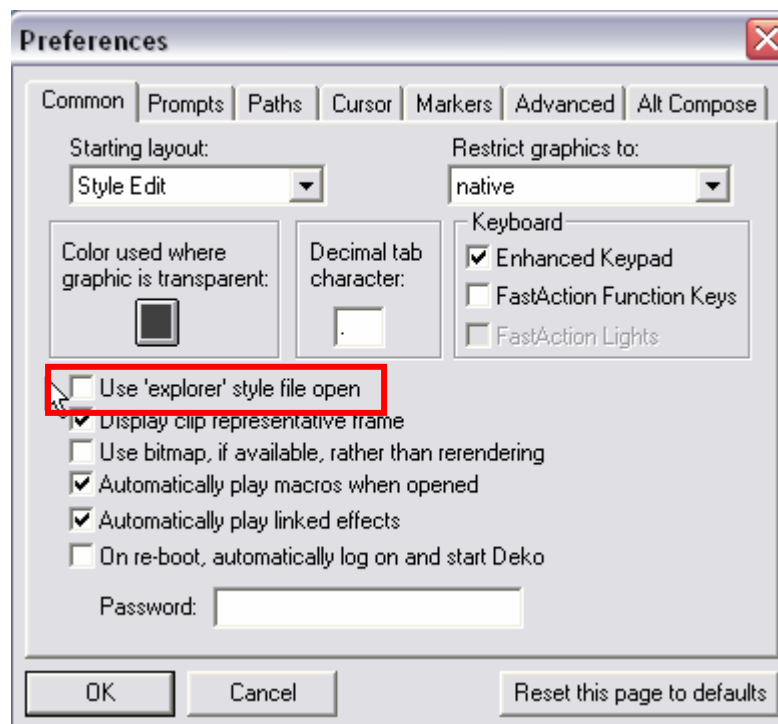
- The graphic and Motion output windows and rendered effects using the *Make DekoMovie* feature will be watermarked with transparent logos.



- You can manually author macros from the Macro Edit window and play a macro. But many other macro functions are disabled, including: learn (record), pause and stop. You cannot convert a graphic or sequence into a macro file.
- You can open (File>Open) any graphic file type supported by Deko, but you cannot save (File>Save As) native Deko file types (.dko, .seq, .pst, .efx, .mot...etc).
- You can export graphics (File>Save As) created in this demo program as common graphic file types including: .tga, .tif, .bmp, .jpg, .psd (as flattened file)...etc.

However, you must first set the following software preference for this to work:

- Go to: Options>Preferences>Common.
- **Uncheck** "Use 'explorer' style file open".
- Go to Options>Save Settings Now, to keep that preference.



Useful Resources and User Documentation:

Though downloading this free software does not entitle you to full broadcast support, there are resources you can access to help you make efficient use of the PostDeko Demo software:

- PostDeko program help menus. From PostDeko, go to Help>Avid Deko Help
- PostDeko ReadMe www.avid.com/onlinesupport/PostDekoReadMe
- Avid Deko Product Users Guide www.avid.com/onlineSupport/DekoUserGuide
- Avid Deko family online support center www.avid.com/onlinesupport
- PostDeko web page for overview and specifications www.avid.com/PostDeko/
- Deko family web page for product information www.avid.com/dekoFamily/